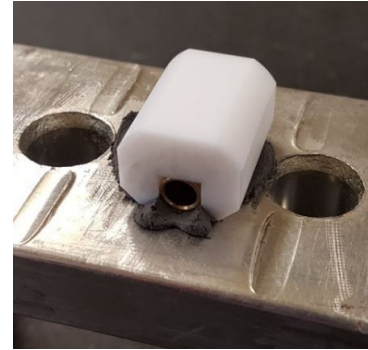




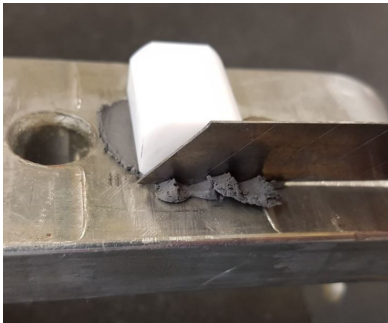
Step 1 - All surfaces should be prepared in accordance with the epoxy manufacturers recommendations. PyrOnodes are installed into multiple reusable putty moulding tools by sliding in from either end. Ensure both fibre holes are covered by the mould.



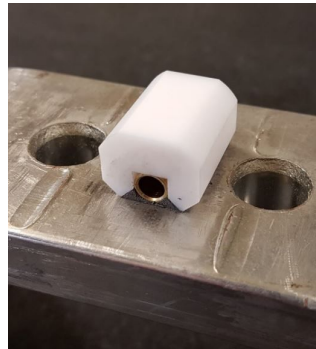
Step 2 - Knead desired quantity of putty (start with a thin slice if it's your first time) until uniform in colour and then apply to the mould/s. Precision is not required, excess will simply press out the sides and can be reused.



Step 3 - Apply to the surface by pushing down hard, forcing excess putty out around the mould. The bottom edges of the mould should contact the surface being adhered too.



Step 4 - Excess putty can be easily trimmed using a sharp blade, it will simply fall away



Step 5 - Allow putty to harden for 30 minutes. Carefully tap the mould at either end of the PyrOnode casing to release and then continue to slide it off. DO NOT attempt to lever the mould vertically off the PyrOnode



Step 6 - Attachment complete. PyrOnode can be removed without damage using a sharp cold chisel and hammer.

For technical support or queries regarding PyrOnode installation, please contact sales@pyroptic.com