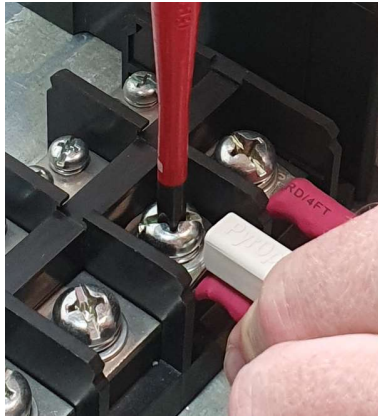
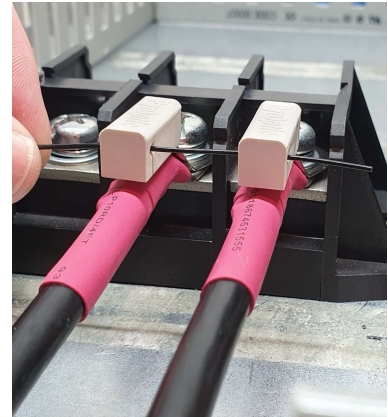


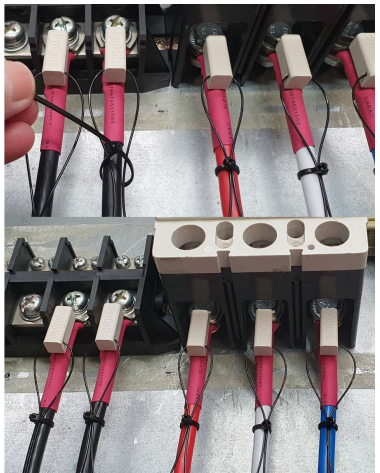
Step 1 - Ensure energy isolations are in place before commencing. Confirm PyrOnode suits temperature rating, cable & bolt size.



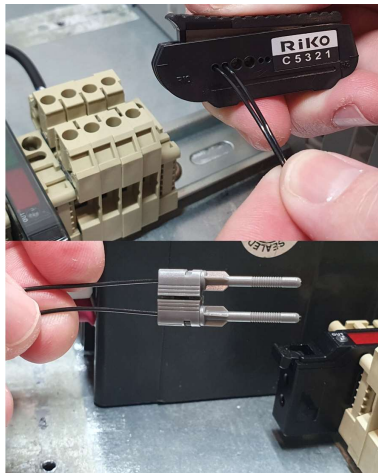
Step 2 - Align PyrOnode with cable lug in orientation as shown. Ensure face to face contact between lugs and connection torqued correctly.



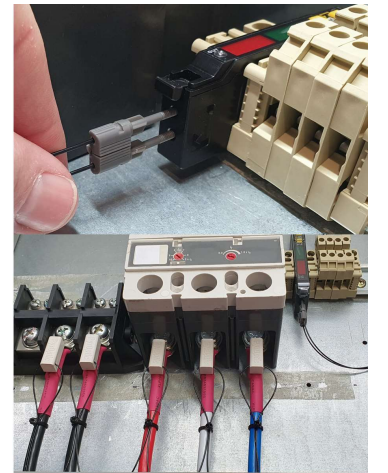
Step 3 - Loop plastic optical fibre (POF) through each PyrOnode within the defined zone. Then route both ends back to the fibre amplifier.



Step 4 - While looping POF between adjacent PyrOnodes ensure sufficient slack so POF can be cable tied back to its associated conductor as shown.



Step 5 - Cleave ends of POF with fibre cleaver as shown. Insert both ends of the POF loop flush through each relay adapter pin and rotate to lock POF into position.



Step 6 - Insert POF adapter into fibre amplifier's optical ports as shown. Lift amplifier locking tab to retain adapter. Reinstall all phase barriers & terminal shrouds.

For technical support or queries regarding PyrOnode installation, please contact sales@pyroptic.com

PyrOptic Pty Ltd

ACN 621 751 693 ABN 78 621 751 693

Document Number: PYR-IG-05.00